

IV 山口県知事選挙

1 概要

(1) 候補者

| 届出 番号 | 届出 の別 | ふりがな 候補者氏名 (通称) | 住所 | 年齢 | 党派 | 職業 | 新現元 の別 |
|----------|----------|---------------------------------|--------|----|-----|-------|-----------|
| 1 | 本人 | ちば まり 千葉 まり (ちば まり) | 山口県山口市 | 68 | 無所属 | 無職 | 新 |
| 2 | 本人 | むらおか つぐまさ 村岡 嗣政 (村岡 つぐまさ) | 山口県山口市 | 49 | 無所属 | 山口県知事 | 現 |

2 投票

(1) 投票区別投票者数・投票率

| 区 分 | 当日有権者数 | | | 期日前投票者数 | | | 不在者投票者数 | | | 投票所投票者数 | | | 投票者数計 | | | 投票率 | | |
|------|--------|-------|-------|---------|-----|-----|---------|----|----|---------|-----|-----|-------|-----|-------|--------|--------|--------|
| | 男 | 女 | 計 | 男 | 女 | 計 | 男 | 女 | 計 | 男 | 女 | 計 | 男 | 女 | 計 | 男 | 女 | 計 |
| 東部第1 | 963 | 1,213 | 2,176 | 119 | 192 | 311 | 6 | 14 | 20 | 145 | 133 | 278 | 270 | 339 | 609 | 28.04% | 27.95% | 27.99% |
| 東部第2 | 1,289 | 1,742 | 3,031 | 183 | 321 | 504 | 3 | 8 | 11 | 214 | 270 | 484 | 400 | 599 | 999 | 31.03% | 34.39% | 32.96% |
| 東部第3 | 803 | 1,052 | 1,855 | 75 | 131 | 206 | 6 | 8 | 14 | 122 | 188 | 310 | 203 | 327 | 530 | 25.28% | 31.08% | 28.57% |
| 東部第4 | 924 | 1,202 | 2,126 | 85 | 157 | 242 | 7 | 5 | 12 | 175 | 225 | 400 | 267 | 387 | 654 | 28.90% | 32.20% | 30.76% |
| 東部第5 | 1,150 | 1,586 | 2,736 | 127 | 222 | 349 | 9 | 7 | 16 | 190 | 217 | 407 | 326 | 446 | 772 | 28.35% | 28.12% | 28.22% |
| 東部第6 | 1,388 | 1,564 | 2,952 | 95 | 109 | 204 | 1 | 5 | 6 | 242 | 264 | 506 | 338 | 378 | 716 | 24.35% | 24.17% | 24.25% |
| 北部第1 | 659 | 806 | 1,465 | 49 | 69 | 118 | 2 | 6 | 8 | 127 | 156 | 283 | 178 | 231 | 409 | 27.01% | 28.66% | 27.92% |
| 北部第2 | 696 | 904 | 1,600 | 48 | 90 | 138 | 3 | 10 | 13 | 129 | 124 | 253 | 180 | 224 | 404 | 25.86% | 24.78% | 25.25% |
| 北部第3 | 1,280 | 1,612 | 2,892 | 87 | 147 | 234 | 4 | 12 | 16 | 227 | 269 | 496 | 318 | 428 | 746 | 24.84% | 26.55% | 25.80% |
| 北部第4 | 829 | 1,003 | 1,832 | 67 | 92 | 159 | 8 | 8 | 16 | 177 | 203 | 380 | 252 | 303 | 555 | 30.40% | 30.21% | 30.29% |
| 北部第5 | 1,838 | 2,502 | 4,340 | 87 | 176 | 263 | 10 | 10 | 20 | 309 | 381 | 690 | 406 | 567 | 973 | 22.09% | 22.66% | 22.42% |
| 北部第6 | 1,843 | 2,303 | 4,146 | 96 | 166 | 262 | 19 | 48 | 67 | 314 | 358 | 672 | 429 | 572 | 1,001 | 23.28% | 24.84% | 24.14% |
| 北部第7 | 1,403 | 1,717 | 3,120 | 99 | 128 | 227 | 4 | 12 | 16 | 257 | 311 | 568 | 360 | 451 | 811 | 25.66% | 26.27% | 25.99% |
| 北部第8 | 1,147 | 1,390 | 2,537 | 38 | 79 | 117 | 8 | 22 | 30 | 243 | 297 | 540 | 289 | 398 | 687 | 25.20% | 28.63% | 27.08% |
| 北部第9 | 1,159 | 1,370 | 2,529 | 67 | 105 | 172 | 3 | 8 | 11 | 225 | 252 | 477 | 295 | 365 | 660 | 25.45% | 26.64% | 26.10% |
| 中部第1 | 870 | 1,106 | 1,976 | 104 | 134 | 238 | 8 | 12 | 20 | 148 | 178 | 326 | 260 | 324 | 584 | 29.89% | 29.29% | 29.55% |
| 中部第2 | 676 | 818 | 1,494 | 78 | 126 | 204 | 4 | 6 | 10 | 87 | 94 | 181 | 169 | 226 | 395 | 25.00% | 27.63% | 26.44% |
| 中部第3 | 592 | 744 | 1,336 | 30 | 37 | 67 | 5 | 3 | 8 | 101 | 138 | 239 | 136 | 178 | 314 | 22.97% | 23.92% | 23.50% |
| 中部第4 | 658 | 760 | 1,418 | 30 | 45 | 75 | 5 | 10 | 15 | 115 | 160 | 275 | 150 | 215 | 365 | 22.80% | 28.29% | 25.74% |
| 西部第1 | 952 | 1,261 | 2,213 | 33 | 56 | 89 | 5 | 10 | 15 | 201 | 271 | 472 | 239 | 337 | 576 | 25.11% | 26.72% | 26.03% |
| 西部第2 | 868 | 943 | 1,811 | 81 | 99 | 180 | 0 | 10 | 10 | 84 | 98 | 182 | 165 | 207 | 372 | 19.01% | 21.95% | 20.54% |
| 西部第3 | 1,409 | 1,782 | 3,191 | 87 | 143 | 230 | 9 | 12 | 21 | 228 | 261 | 489 | 324 | 416 | 740 | 23.00% | 23.34% | 23.19% |
| 彦島第1 | 977 | 1,195 | 2,172 | 80 | 145 | 225 | 4 | 5 | 9 | 179 | 198 | 377 | 263 | 348 | 611 | 26.92% | 29.12% | 28.13% |
| 彦島第2 | 817 | 982 | 1,799 | 69 | 96 | 165 | 5 | 8 | 13 | 136 | 142 | 278 | 210 | 246 | 456 | 25.70% | 25.05% | 25.35% |
| 彦島第3 | 1,204 | 1,439 | 2,643 | 55 | 98 | 153 | 13 | 15 | 28 | 244 | 292 | 536 | 312 | 405 | 717 | 25.91% | 28.14% | 27.13% |
| 彦島第4 | 1,198 | 1,450 | 2,648 | 101 | 159 | 260 | 14 | 10 | 24 | 227 | 234 | 461 | 342 | 403 | 745 | 28.55% | 27.79% | 28.13% |
| 彦島第5 | 1,180 | 1,449 | 2,629 | 76 | 124 | 200 | 2 | 9 | 11 | 196 | 218 | 414 | 274 | 351 | 625 | 23.22% | 24.22% | 23.77% |
| 彦島第6 | 706 | 794 | 1,500 | 61 | 82 | 143 | 3 | 3 | 6 | 121 | 148 | 269 | 185 | 233 | 418 | 26.20% | 29.35% | 27.87% |
| 彦島第7 | 852 | 1,060 | 1,912 | 70 | 98 | 168 | 1 | 2 | 3 | 152 | 163 | 315 | 223 | 263 | 486 | 26.17% | 24.81% | 25.42% |
| 彦島第8 | 1,399 | 1,535 | 2,934 | 102 | 167 | 269 | 7 | 7 | 14 | 271 | 295 | 566 | 380 | 469 | 849 | 27.16% | 30.55% | 28.94% |
| 彦島第9 | 1,005 | 1,159 | 2,164 | 72 | 111 | 183 | 7 | 8 | 15 | 172 | 215 | 387 | 251 | 334 | 585 | 24.98% | 28.82% | 27.03% |

| 区 分 | 当日有権者数 | | | 期日前投票者数 | | | 不在者投票者数 | | | 投票所投票者数 | | | 投票者数計 | | | 投票率 | | |
|-------|--------|-------|-------|---------|-----|-----|---------|----|----|---------|-----|-------|-------|-----|-------|--------|--------|--------|
| | 男 | 女 | 計 | 男 | 女 | 計 | 男 | 女 | 計 | 男 | 女 | 計 | 男 | 女 | 計 | 男 | 女 | 計 |
| 六 連 | 35 | 46 | 81 | 1 | 0 | 1 | 0 | 0 | 0 | 25 | 29 | 54 | 26 | 29 | 55 | 74.29% | 63.04% | 67.90% |
| 長府第 1 | 1,550 | 1,836 | 3,386 | 104 | 178 | 282 | 11 | 18 | 29 | 350 | 359 | 709 | 465 | 555 | 1,020 | 30.00% | 30.23% | 30.12% |
| 長府第 2 | 1,161 | 1,424 | 2,585 | 94 | 135 | 229 | 10 | 15 | 25 | 264 | 313 | 577 | 368 | 463 | 831 | 31.70% | 32.51% | 32.15% |
| 長府第 3 | 843 | 1,025 | 1,868 | 50 | 81 | 131 | 5 | 11 | 16 | 167 | 209 | 376 | 222 | 301 | 523 | 26.33% | 29.37% | 28.00% |
| 長府第 4 | 1,516 | 1,849 | 3,365 | 110 | 185 | 295 | 11 | 61 | 72 | 296 | 306 | 602 | 417 | 552 | 969 | 27.51% | 29.85% | 28.80% |
| 長府第 5 | 375 | 450 | 825 | 41 | 66 | 107 | 4 | 5 | 9 | 62 | 68 | 130 | 107 | 139 | 246 | 28.53% | 30.89% | 29.82% |
| 長府第 6 | 1,744 | 1,935 | 3,679 | 96 | 127 | 223 | 6 | 11 | 17 | 425 | 422 | 847 | 527 | 560 | 1,087 | 30.22% | 28.94% | 29.55% |
| 長府第 7 | 1,749 | 2,101 | 3,850 | 117 | 183 | 300 | 11 | 14 | 25 | 325 | 347 | 672 | 453 | 544 | 997 | 25.90% | 25.89% | 25.90% |
| 長府第 8 | 645 | 773 | 1,418 | 52 | 88 | 140 | 2 | 4 | 6 | 139 | 153 | 292 | 193 | 245 | 438 | 29.92% | 31.69% | 30.89% |
| 長府第 9 | 1,233 | 1,391 | 2,624 | 95 | 143 | 238 | 11 | 32 | 43 | 220 | 215 | 435 | 326 | 390 | 716 | 26.44% | 28.04% | 27.29% |
| 王司第 1 | 551 | 620 | 1,171 | 29 | 42 | 71 | 3 | 3 | 6 | 131 | 145 | 276 | 163 | 190 | 353 | 29.58% | 30.65% | 30.15% |
| 王司第 2 | 895 | 1,009 | 1,904 | 62 | 62 | 124 | 13 | 11 | 24 | 186 | 234 | 420 | 261 | 307 | 568 | 29.16% | 30.43% | 29.83% |
| 王司第 3 | 1,513 | 1,772 | 3,285 | 98 | 160 | 258 | 7 | 7 | 14 | 291 | 311 | 602 | 396 | 478 | 874 | 26.17% | 26.98% | 26.61% |
| 清 末 | 2,488 | 2,712 | 5,200 | 256 | 301 | 557 | 9 | 6 | 15 | 465 | 477 | 942 | 730 | 784 | 1,514 | 29.34% | 28.91% | 29.12% |
| 小 月 | 2,636 | 2,961 | 5,597 | 262 | 366 | 628 | 11 | 16 | 27 | 546 | 554 | 1,100 | 819 | 936 | 1,755 | 31.07% | 31.61% | 31.36% |
| 王喜第 1 | 827 | 918 | 1,745 | 70 | 98 | 168 | 16 | 17 | 33 | 195 | 206 | 401 | 281 | 321 | 602 | 33.98% | 34.97% | 34.50% |
| 王喜第 2 | 595 | 407 | 1,002 | 57 | 46 | 103 | 2 | 5 | 7 | 114 | 99 | 213 | 173 | 150 | 323 | 29.08% | 36.86% | 32.24% |
| 吉 田 | 566 | 618 | 1,184 | 63 | 67 | 130 | 3 | 3 | 6 | 161 | 164 | 325 | 227 | 234 | 461 | 40.11% | 37.86% | 38.94% |
| 勝山第 1 | 2,317 | 2,564 | 4,881 | 177 | 231 | 408 | 6 | 8 | 14 | 380 | 401 | 781 | 563 | 640 | 1,203 | 24.30% | 24.96% | 24.65% |
| 勝山第 2 | 192 | 235 | 427 | 27 | 31 | 58 | 2 | 8 | 10 | 46 | 43 | 89 | 75 | 82 | 157 | 39.06% | 34.89% | 36.77% |
| 勝山第 3 | 2,433 | 2,665 | 5,098 | 244 | 322 | 566 | 17 | 16 | 33 | 346 | 339 | 685 | 607 | 677 | 1,284 | 24.95% | 25.40% | 25.19% |
| 勝山第 4 | 1,252 | 1,408 | 2,660 | 79 | 122 | 201 | 17 | 22 | 39 | 243 | 268 | 511 | 339 | 412 | 751 | 27.08% | 29.26% | 28.23% |
| 勝山第 5 | 1,416 | 1,623 | 3,039 | 136 | 187 | 323 | 3 | 6 | 9 | 252 | 274 | 526 | 391 | 467 | 858 | 27.61% | 28.77% | 28.23% |
| 勝山第 6 | 2,425 | 2,570 | 4,995 | 177 | 234 | 411 | 8 | 4 | 12 | 331 | 358 | 689 | 516 | 596 | 1,112 | 21.28% | 23.19% | 22.26% |
| 内日第 1 | 190 | 237 | 427 | 23 | 26 | 49 | 4 | 2 | 6 | 54 | 73 | 127 | 81 | 101 | 182 | 42.63% | 42.62% | 42.62% |
| 内日第 2 | 242 | 313 | 555 | 22 | 36 | 58 | 0 | 3 | 3 | 76 | 80 | 156 | 98 | 119 | 217 | 40.50% | 38.02% | 39.10% |
| 川中第 1 | 2,888 | 3,447 | 6,335 | 200 | 294 | 494 | 3 | 17 | 20 | 605 | 642 | 1,247 | 808 | 953 | 1,761 | 27.98% | 27.65% | 27.80% |
| 川中第 2 | 1,867 | 2,135 | 4,002 | 179 | 214 | 393 | 9 | 5 | 14 | 352 | 334 | 686 | 540 | 553 | 1,093 | 28.92% | 25.90% | 27.31% |
| 川中第 3 | 1,034 | 1,214 | 2,248 | 68 | 107 | 175 | 0 | 8 | 8 | 177 | 185 | 362 | 245 | 300 | 545 | 23.69% | 24.71% | 24.24% |
| 川中第 4 | 1,327 | 1,573 | 2,900 | 65 | 101 | 166 | 5 | 4 | 9 | 227 | 231 | 458 | 297 | 336 | 633 | 22.38% | 21.36% | 21.83% |
| 川中第 5 | 1,294 | 1,557 | 2,851 | 42 | 58 | 100 | 2 | 9 | 11 | 225 | 282 | 507 | 269 | 349 | 618 | 20.79% | 22.41% | 21.68% |
| 川中第 6 | 2,244 | 2,606 | 4,850 | 139 | 175 | 314 | 7 | 9 | 16 | 418 | 414 | 832 | 564 | 598 | 1,162 | 25.13% | 22.95% | 23.96% |
| 川中第 7 | 1,320 | 1,551 | 2,871 | 82 | 113 | 195 | 3 | 9 | 12 | 251 | 307 | 558 | 336 | 429 | 765 | 25.45% | 27.66% | 26.65% |

| 区 分 | 当日有権者数 | | | 期日前投票者数 | | | 不在者投票者数 | | | 投票所投票者数 | | | 投票者数計 | | | 投票率 | | |
|-------|--------|--------|---------|---------|-------|--------|---------|-----|-------|---------|--------|--------|--------|--------|--------|--------|--------|--------|
| | 男 | 女 | 計 | 男 | 女 | 計 | 男 | 女 | 計 | 男 | 女 | 計 | 男 | 女 | 計 | 男 | 女 | 計 |
| 安岡第1 | 2,125 | 2,590 | 4,715 | 177 | 275 | 452 | 21 | 32 | 53 | 341 | 380 | 721 | 539 | 687 | 1,226 | 25.36% | 26.53% | 26.00% |
| 安岡第2 | 1,943 | 2,388 | 4,331 | 149 | 242 | 391 | 12 | 26 | 38 | 311 | 346 | 657 | 472 | 614 | 1,086 | 24.29% | 25.71% | 25.08% |
| 安岡第3 | 1,340 | 1,526 | 2,866 | 104 | 139 | 243 | 6 | 2 | 8 | 241 | 231 | 472 | 351 | 372 | 723 | 26.19% | 24.38% | 25.23% |
| 吉見第1 | 1,324 | 1,393 | 2,717 | 146 | 173 | 319 | 8 | 17 | 25 | 299 | 291 | 590 | 453 | 481 | 934 | 34.21% | 34.53% | 34.38% |
| 吉見第2 | 651 | 645 | 1,296 | 56 | 57 | 113 | 47 | 45 | 92 | 92 | 107 | 199 | 195 | 209 | 404 | 29.95% | 32.40% | 31.17% |
| 吉 母 | 290 | 358 | 648 | 16 | 22 | 38 | 0 | 1 | 1 | 59 | 88 | 147 | 75 | 111 | 186 | 25.86% | 31.01% | 28.70% |
| 蓋 井 | 38 | 34 | 72 | 2 | 1 | 3 | 0 | 0 | 0 | 29 | 21 | 50 | 31 | 22 | 53 | 81.58% | 64.71% | 73.61% |
| 旧下関 計 | 83,808 | 98,922 | 182,730 | 6,418 | 9,392 | 15,810 | 500 | 805 | 1,305 | 15,475 | 17,059 | 32,534 | 22,393 | 27,256 | 49,649 | 26.72% | 27.55% | 27.17% |
| 菊川第1 | 639 | 769 | 1,408 | 58 | 88 | 146 | 1 | 4 | 5 | 143 | 146 | 289 | 202 | 238 | 440 | 31.61% | 30.95% | 31.25% |
| 菊川第2 | 499 | 556 | 1,055 | 69 | 97 | 166 | 1 | 2 | 3 | 133 | 144 | 277 | 203 | 243 | 446 | 40.68% | 43.71% | 42.27% |
| 菊川第3 | 1,297 | 1,535 | 2,832 | 137 | 202 | 339 | 11 | 23 | 34 | 327 | 353 | 680 | 475 | 578 | 1,053 | 36.62% | 37.65% | 37.18% |
| 菊川第4 | 432 | 524 | 956 | 61 | 84 | 145 | 1 | 6 | 7 | 125 | 135 | 260 | 187 | 225 | 412 | 43.29% | 42.94% | 43.10% |
| 菊川 計 | 2,867 | 3,384 | 6,251 | 325 | 471 | 796 | 14 | 35 | 49 | 728 | 778 | 1,506 | 1,067 | 1,284 | 2,351 | 37.22% | 37.94% | 37.61% |
| 豊田第1 | 91 | 171 | 262 | 14 | 18 | 32 | 6 | 15 | 21 | 37 | 44 | 81 | 57 | 77 | 134 | 62.64% | 45.03% | 51.15% |
| 豊田第2 | 50 | 46 | 96 | 9 | 6 | 15 | 4 | 0 | 4 | 20 | 19 | 39 | 33 | 25 | 58 | 66.00% | 54.35% | 60.42% |
| 豊田第3 | 63 | 80 | 143 | 9 | 16 | 25 | 1 | 0 | 1 | 30 | 41 | 71 | 40 | 57 | 97 | 63.49% | 71.25% | 67.83% |
| 豊田第4 | 34 | 39 | 73 | 8 | 12 | 20 | 0 | 0 | 0 | 16 | 17 | 33 | 24 | 29 | 53 | 70.59% | 74.36% | 72.60% |
| 豊田第5 | 65 | 66 | 131 | 11 | 16 | 27 | 0 | 0 | 0 | 33 | 31 | 64 | 44 | 47 | 91 | 67.69% | 71.21% | 69.47% |
| 豊田第6 | 176 | 180 | 356 | 25 | 32 | 57 | 0 | 1 | 1 | 56 | 55 | 111 | 81 | 88 | 169 | 46.02% | 48.89% | 47.47% |
| 豊田第7 | 168 | 199 | 367 | 14 | 27 | 41 | 0 | 3 | 3 | 60 | 66 | 126 | 74 | 96 | 170 | 44.05% | 48.24% | 46.32% |
| 豊田第8 | 717 | 820 | 1537 | 80 | 127 | 207 | 8 | 8 | 16 | 199 | 229 | 428 | 287 | 364 | 651 | 40.03% | 44.39% | 42.36% |
| 豊田第9 | 127 | 135 | 262 | 28 | 41 | 69 | 1 | 0 | 1 | 46 | 45 | 91 | 75 | 86 | 161 | 59.06% | 63.70% | 61.45% |
| 豊田第10 | 173 | 183 | 356 | 20 | 27 | 47 | 1 | 0 | 1 | 39 | 50 | 89 | 60 | 77 | 137 | 34.68% | 42.08% | 38.48% |
| 豊田第11 | 107 | 120 | 227 | 19 | 27 | 46 | 1 | 1 | 2 | 38 | 37 | 75 | 58 | 65 | 123 | 54.21% | 54.17% | 54.19% |
| 豊田第12 | 176 | 205 | 381 | 26 | 39 | 65 | 1 | 2 | 3 | 41 | 43 | 84 | 68 | 84 | 152 | 38.64% | 40.98% | 39.90% |
| 豊田 計 | 1,947 | 2,244 | 4,191 | 263 | 388 | 651 | 23 | 30 | 53 | 615 | 677 | 1,292 | 901 | 1,095 | 1,996 | 46.28% | 48.80% | 47.63% |
| 宇賀第1 | 88 | 133 | 221 | 24 | 32 | 56 | 0 | 1 | 1 | 28 | 37 | 65 | 52 | 70 | 122 | 59.09% | 52.63% | 55.20% |
| 宇賀第2 | 23 | 29 | 52 | 1 | 1 | 2 | 0 | 0 | 0 | 16 | 22 | 38 | 17 | 23 | 40 | 73.91% | 79.31% | 76.92% |
| 宇賀第3 | 344 | 466 | 810 | 41 | 57 | 98 | 2 | 3 | 5 | 95 | 120 | 215 | 138 | 180 | 318 | 40.12% | 38.63% | 39.26% |
| 小串第1 | 306 | 373 | 679 | 43 | 58 | 101 | 1 | 3 | 4 | 56 | 62 | 118 | 100 | 123 | 223 | 32.68% | 32.98% | 32.84% |
| 小串第2 | 451 | 575 | 1026 | 34 | 36 | 70 | 7 | 5 | 12 | 127 | 169 | 296 | 168 | 210 | 378 | 37.25% | 36.52% | 36.84% |
| 川棚第1 | 655 | 786 | 1441 | 79 | 125 | 204 | 6 | 17 | 23 | 141 | 164 | 305 | 226 | 306 | 532 | 34.50% | 38.93% | 36.92% |
| 川棚第2 | 257 | 302 | 559 | 40 | 55 | 95 | 0 | 1 | 1 | 47 | 58 | 105 | 87 | 114 | 201 | 33.85% | 37.75% | 35.96% |

| 区 分 | 当日有権者数 | | | 期日前投票者数 | | | 不在者投票者数 | | | 投票所投票者数 | | | 投票者数計 | | | 投票率 | | |
|-------------|---------------|----------------|----------------|--------------|---------------|---------------|------------|------------|--------------|---------------|---------------|---------------|---------------|---------------|---------------|---------------|---------------|---------------|
| | 男 | 女 | 計 | 男 | 女 | 計 | 男 | 女 | 計 | 男 | 女 | 計 | 男 | 女 | 計 | 男 | 女 | 計 |
| 川棚第3 | 154 | 166 | 320 | 31 | 37 | 68 | 1 | 2 | 3 | 50 | 50 | 100 | 82 | 89 | 171 | 53.25% | 53.61% | 53.44% |
| 川棚第4 | 346 | 393 | 739 | 48 | 50 | 98 | 6 | 3 | 9 | 75 | 88 | 163 | 129 | 141 | 270 | 37.28% | 35.88% | 36.54% |
| 川棚第5 | 890 | 1046 | 1936 | 110 | 156 | 266 | 4 | 7 | 11 | 132 | 149 | 281 | 246 | 312 | 558 | 27.64% | 29.83% | 28.82% |
| 川棚第6 | 302 | 348 | 650 | 29 | 52 | 81 | 1 | 1 | 2 | 55 | 65 | 120 | 85 | 118 | 203 | 28.15% | 33.91% | 31.23% |
| 黒井第1 | 664 | 826 | 1490 | 58 | 85 | 143 | 2 | 1 | 3 | 147 | 179 | 326 | 207 | 265 | 472 | 31.17% | 32.08% | 31.68% |
| 黒井第2 | 162 | 162 | 324 | 25 | 36 | 61 | 0 | 1 | 1 | 41 | 27 | 68 | 66 | 64 | 130 | 40.74% | 39.51% | 40.12% |
| 黒井第3 | 294 | 304 | 598 | 29 | 52 | 81 | 0 | 2 | 2 | 48 | 54 | 102 | 77 | 108 | 185 | 26.19% | 35.53% | 30.94% |
| 黒井第4 | 735 | 847 | 1582 | 56 | 81 | 137 | 3 | 6 | 9 | 187 | 213 | 400 | 246 | 300 | 546 | 33.47% | 35.42% | 34.51% |
| 黒井第5 | 312 | 351 | 663 | 33 | 45 | 78 | 2 | 0 | 2 | 95 | 127 | 222 | 130 | 172 | 302 | 41.67% | 49.00% | 45.55% |
| 室 津 | 528 | 592 | 1120 | 55 | 75 | 130 | 3 | 6 | 9 | 166 | 184 | 350 | 224 | 265 | 489 | 42.42% | 44.76% | 43.66% |
| 豊浦 計 | 6,511 | 7,699 | 14,210 | 736 | 1,033 | 1,769 | 38 | 59 | 97 | 1,506 | 1,768 | 3,274 | 2,280 | 2,860 | 5,140 | 35.02% | 37.15% | 36.17% |
| 田耕第1 | 289 | 379 | 668 | 74 | 90 | 164 | 4 | 15 | 19 | 76 | 76 | 152 | 154 | 181 | 335 | 53.29% | 47.76% | 50.15% |
| 田耕第2 | 76 | 77 | 153 | 15 | 20 | 35 | 1 | 2 | 3 | 29 | 20 | 49 | 45 | 42 | 87 | 59.21% | 54.55% | 56.86% |
| 滝部第1 | 669 | 834 | 1503 | 92 | 141 | 233 | 5 | 14 | 19 | 163 | 194 | 357 | 260 | 349 | 609 | 38.86% | 41.85% | 40.52% |
| 滝部第2 | 151 | 177 | 328 | 23 | 49 | 72 | 4 | 1 | 5 | 32 | 38 | 70 | 59 | 88 | 147 | 39.07% | 49.72% | 44.82% |
| 神玉第1 | 251 | 314 | 565 | 18 | 30 | 48 | 3 | 4 | 7 | 59 | 100 | 159 | 80 | 134 | 214 | 31.87% | 42.68% | 37.88% |
| 神玉第2 | 229 | 299 | 528 | 35 | 49 | 84 | 1 | 2 | 3 | 62 | 65 | 127 | 98 | 116 | 214 | 42.79% | 38.80% | 40.53% |
| 神玉第3 | 180 | 196 | 376 | 22 | 28 | 50 | 0 | 1 | 1 | 54 | 64 | 118 | 76 | 93 | 169 | 42.22% | 47.45% | 44.95% |
| 神田第1 | 120 | 153 | 273 | 18 | 31 | 49 | 1 | 1 | 2 | 36 | 37 | 73 | 55 | 69 | 124 | 45.83% | 45.10% | 45.42% |
| 神田第2 | 189 | 230 | 419 | 16 | 29 | 45 | 1 | 6 | 7 | 51 | 63 | 114 | 68 | 98 | 166 | 35.98% | 42.61% | 39.62% |
| 神田第3 | 183 | 228 | 411 | 23 | 37 | 60 | 3 | 0 | 3 | 49 | 71 | 120 | 75 | 108 | 183 | 40.98% | 47.37% | 44.53% |
| 角島第1 | 138 | 140 | 278 | 5 | 4 | 9 | 0 | 0 | 0 | 64 | 71 | 135 | 69 | 75 | 144 | 50.00% | 53.57% | 51.80% |
| 角島第2 | 154 | 174 | 328 | 10 | 11 | 21 | 0 | 0 | 0 | 65 | 76 | 141 | 75 | 87 | 162 | 48.70% | 50.00% | 49.39% |
| 阿川第1 | 330 | 398 | 728 | 23 | 31 | 54 | 6 | 4 | 10 | 105 | 120 | 225 | 134 | 155 | 289 | 40.61% | 38.94% | 39.70% |
| 阿川第2 | 92 | 117 | 209 | 9 | 12 | 21 | 0 | 0 | 0 | 30 | 38 | 68 | 39 | 50 | 89 | 42.39% | 42.74% | 42.58% |
| 栗野第1 | 95 | 121 | 216 | 21 | 30 | 51 | 1 | 2 | 3 | 30 | 31 | 61 | 52 | 63 | 115 | 54.74% | 52.07% | 53.24% |
| 栗野第2 | 230 | 247 | 477 | 32 | 25 | 57 | 3 | 1 | 4 | 93 | 111 | 204 | 128 | 137 | 265 | 55.65% | 55.47% | 55.56% |
| 豊北 計 | 3,376 | 4,084 | 7,460 | 436 | 617 | 1,053 | 33 | 53 | 86 | 998 | 1,175 | 2,173 | 1,467 | 1,845 | 3,312 | 43.45% | 45.18% | 44.40% |
| 合計 | 98,509 | 116,333 | 214,842 | 8,178 | 11,901 | 20,079 | 608 | 982 | 1,590 | 19,322 | 21,457 | 40,779 | 28,108 | 34,340 | 62,448 | 28.53% | 29.52% | 29.07% |

(2) 時間別投票者数

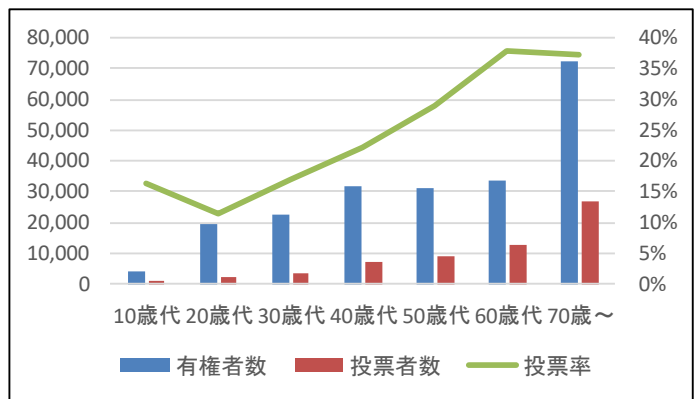
| 集計時刻 | | 合計 (累計) | | | | | |
|------|---|---------|--------|-------|-------|-------|-------|
| | | 旧下関 | 菊川 | 豊田 | 豊浦 | 豊北 | |
| 8時 | 男 | 752 | 571 | 27 | 35 | 59 | 60 |
| | 女 | 474 | 362 | 11 | 16 | 43 | 42 |
| | 計 | 1,226 | 933 | 38 | 51 | 102 | 102 |
| 9時 | 男 | 2,010 | 1,469 | 63 | 94 | 214 | 170 |
| | 女 | 1,579 | 1,104 | 51 | 74 | 188 | 162 |
| | 計 | 3,589 | 2,573 | 114 | 168 | 402 | 332 |
| 10時 | 男 | 4,317 | 3,169 | 169 | 177 | 454 | 348 |
| | 女 | 4,084 | 2,883 | 157 | 178 | 471 | 395 |
| | 計 | 8,401 | 6,052 | 326 | 355 | 925 | 743 |
| 11時 | 男 | 7,215 | 5,390 | 298 | 267 | 726 | 534 |
| | 女 | 7,490 | 5,488 | 293 | 296 | 777 | 636 |
| | 計 | 14,705 | 10,878 | 591 | 563 | 1,503 | 1,170 |
| 12時 | 男 | 9,508 | 7,217 | 392 | 357 | 883 | 659 |
| | 女 | 10,216 | 7,636 | 391 | 408 | 991 | 790 |
| | 計 | 19,724 | 14,853 | 783 | 765 | 1,874 | 1,449 |
| 13時 | 男 | 10,944 | 8,428 | 432 | 392 | 983 | 709 |
| | 女 | 11,865 | 9,034 | 437 | 441 | 1,105 | 848 |
| | 計 | 22,809 | 17,462 | 869 | 833 | 2,088 | 1,557 |
| 14時 | 男 | 12,555 | 9,736 | 491 | 450 | 1,102 | 776 |
| | 女 | 13,801 | 10,614 | 500 | 508 | 1,263 | 916 |
| | 計 | 26,356 | 20,350 | 991 | 958 | 2,365 | 1,692 |
| 15時 | 男 | 14,228 | 11,122 | 559 | 486 | 1,219 | 842 |
| | 女 | 15,816 | 12,267 | 579 | 552 | 1,412 | 1,006 |
| | 計 | 30,044 | 23,389 | 1,138 | 1,038 | 2,631 | 1,848 |
| 16時 | 男 | 15,662 | 12,359 | 606 | 525 | 1,288 | 884 |
| | 女 | 17,494 | 13,701 | 641 | 590 | 1,503 | 1,059 |
| | 計 | 33,156 | 26,060 | 1,247 | 1,115 | 2,791 | 1,943 |
| 17時 | 男 | 16,990 | 13,446 | 656 | 564 | 1,386 | 938 |
| | 女 | 18,957 | 14,880 | 701 | 633 | 1,628 | 1,115 |
| | 計 | 35,947 | 28,326 | 1,357 | 1,197 | 3,014 | 2,053 |
| 18時 | 男 | 18,158 | 14,418 | 696 | 601 | 1,465 | 978 |
| | 女 | 20,222 | 15,948 | 742 | 665 | 1,713 | 1,154 |
| | 計 | 38,380 | 30,366 | 1,438 | 1,266 | 3,178 | 2,132 |
| 19時 | 男 | 18,901 | 15,054 | 728 | 615 | 1,506 | 998 |
| | 女 | 21,018 | 16,620 | 778 | 677 | 1,768 | 1,175 |
| | 計 | 39,919 | 31,674 | 1,506 | 1,292 | 3,274 | 2,173 |
| 20時 | 男 | 19,322 | 15,475 | | | | |
| | 女 | 21,457 | 17,059 | | | | |
| | 計 | 40,779 | 32,534 | | | | |

| 集計時刻 | | 合計 (時間別) | | | | | |
|------|---|----------|-------|-----|-----|-----|-----|
| | | 旧下関 | 菊川 | 豊田 | 豊浦 | 豊北 | |
| 7時 | 男 | 752 | 571 | 27 | 35 | 59 | 60 |
| | 女 | 474 | 362 | 11 | 16 | 43 | 42 |
| | 計 | 1,226 | 933 | 38 | 51 | 102 | 102 |
| 8時 | 男 | 1,258 | 898 | 36 | 59 | 155 | 110 |
| | 女 | 1,105 | 742 | 40 | 58 | 145 | 120 |
| | 計 | 2,363 | 1,640 | 76 | 117 | 300 | 230 |
| 9時 | 男 | 2,307 | 1,700 | 106 | 83 | 240 | 178 |
| | 女 | 2,505 | 1,779 | 106 | 104 | 283 | 233 |
| | 計 | 4,812 | 3,479 | 212 | 187 | 523 | 411 |
| 10時 | 男 | 2,898 | 2,221 | 129 | 90 | 272 | 186 |
| | 女 | 3,406 | 2,605 | 136 | 118 | 306 | 241 |
| | 計 | 6,304 | 4,826 | 265 | 208 | 578 | 427 |
| 11時 | 男 | 2,293 | 1,827 | 94 | 90 | 157 | 125 |
| | 女 | 2,726 | 2,148 | 98 | 112 | 214 | 154 |
| | 計 | 5,019 | 3,975 | 192 | 202 | 371 | 279 |
| 12時 | 男 | 1,436 | 1,211 | 40 | 35 | 100 | 50 |
| | 女 | 1,649 | 1,398 | 46 | 33 | 114 | 58 |
| | 計 | 3,085 | 2,609 | 86 | 68 | 214 | 108 |
| 13時 | 男 | 1,611 | 1,308 | 59 | 58 | 119 | 67 |
| | 女 | 1,936 | 1,580 | 63 | 67 | 158 | 68 |
| | 計 | 3,547 | 2,888 | 122 | 125 | 277 | 135 |
| 14時 | 男 | 1,673 | 1,386 | 68 | 36 | 117 | 66 |
| | 女 | 2,015 | 1,653 | 79 | 44 | 149 | 90 |
| | 計 | 3,688 | 3,039 | 147 | 80 | 266 | 156 |
| 15時 | 男 | 1,434 | 1,237 | 47 | 39 | 69 | 42 |
| | 女 | 1,678 | 1,434 | 62 | 38 | 91 | 53 |
| | 計 | 3,112 | 2,671 | 109 | 77 | 160 | 95 |
| 16時 | 男 | 1,328 | 1,087 | 50 | 39 | 98 | 54 |
| | 女 | 1,463 | 1,179 | 60 | 43 | 125 | 56 |
| | 計 | 2,791 | 2,266 | 110 | 82 | 223 | 110 |
| 17時 | 男 | 1,168 | 972 | 40 | 37 | 79 | 40 |
| | 女 | 1,265 | 1,068 | 41 | 32 | 85 | 39 |
| | 計 | 2,433 | 2,040 | 81 | 69 | 164 | 79 |
| 18時 | 男 | 743 | 636 | 32 | 14 | 41 | 20 |
| | 女 | 796 | 672 | 36 | 12 | 55 | 21 |
| | 計 | 1,539 | 1,308 | 68 | 26 | 96 | 41 |
| 19時 | 男 | 421 | 421 | | | | |
| | 女 | 439 | 439 | | | | |
| | 計 | 860 | 860 | | | | |

※繰上投票を実施している六連・蓋井投票区についても各時間帯別の投票者数を計上。

(3) 年代別投票者数

| 年代 | 有権者数 | 投票者数 | 投票率 |
|------|---------|--------|--------|
| 10歳代 | 4,255 | 702 | 16.50% |
| 20歳代 | 19,432 | 2,201 | 11.33% |
| 30歳代 | 22,339 | 3,759 | 16.83% |
| 40歳代 | 31,677 | 7,058 | 22.28% |
| 50歳代 | 31,215 | 9,074 | 29.07% |
| 60歳代 | 33,673 | 12,775 | 37.94% |
| 70歳～ | 72,251 | 26,879 | 37.20% |
| 合計 | 214,842 | 62,448 | 29.07% |



(4) 期日前投票者数

| 日付 | 本庁 | 総合支所 | | | | 支 所 | | | | | | | | | | | | ゆめ シティ | 移動 期日前 | 計 | 累計 | | | | | | | | | | | | | | | |
|------|----|-------|-----|-----|-------|-----|-------|-------|-----|-----|-----|-----|-----|-------|----|-----|-----|-----------|-----------|-----|--------|--|--|--|--|--|--|--|--|--|--|--|-------|--------|--------|-----|
| | | 菊川 | 豊田 | 豊浦 | 豊北 | 彦島 | 長府 | 王司 | 清末 | 小月 | 王喜 | 吉田 | 勝山 | 内日 | 川中 | 安岡 | 吉見 | | | | | | | | | | | | | | | | | | | |
| 1/21 | 金 | 327 | | | | | | | | | | | | | | | | | | | | | | | | | | | | | | | | | 327 | 327 |
| 1/22 | 土 | 312 | | | | | | | | | | | | | | | | | | | | | | | | | | | | | | | | | 312 | 639 |
| 1/23 | 日 | 179 | | | | | | | | | | | | | | | | | | | | | | | | | | | | | | | | | 179 | 818 |
| 1/24 | 月 | 407 | | | | | | | | | | | | | | | | | | | | | | | | | | | | | | | 83 | 490 | 1,308 | |
| 1/25 | 火 | 395 | | | | | | | | | | | | | | | | | | | | | | | | | | | | | | | 81 | 476 | 1,784 | |
| 1/26 | 水 | 409 | | | | | | | | | | | | | | | | | | | | | | | | | | | | | | | | 409 | 2,193 | |
| 1/27 | 木 | 329 | | | | | | | | | | | | | | | | | | | | | | | | | | | | | | | | 329 | 2,522 | |
| 1/28 | 金 | 358 | | | | | | | | | | | | | | | | | | | | | | | | | | | | | | | | 358 | 2,880 | |
| 1/29 | 土 | 269 | 127 | 58 | 251 | 155 | | | | | | | | | | | | | | | | | | | | | | | | | | | 440 | 1,300 | 4,180 | |
| 1/30 | 日 | 221 | 71 | 55 | 127 | 75 | | | | | | | | | | | | | | | | | | | | | | | | | | | 474 | 1,023 | 5,203 | |
| 1/31 | 月 | 260 | 128 | 114 | 261 | 105 | 370 | 317 | 109 | 95 | 111 | 43 | 23 | 513 | 28 | 206 | 189 | 85 | | | | | | | | | | | | | | | 2,957 | 8,160 | | |
| 2/1 | 火 | 276 | 77 | 81 | 261 | 139 | 307 | 292 | 64 | 65 | 126 | 48 | 22 | 376 | 17 | 144 | 141 | 53 | | | | | | | | | | | | | | | 2,489 | 10,649 | | |
| 2/2 | 水 | 308 | 103 | 97 | 214 | 109 | 308 | 278 | 65 | 119 | 101 | 47 | 13 | 398 | 13 | 189 | 176 | 76 | | | | | | | | | | | | | | | 2,614 | 13,263 | | |
| 2/3 | 木 | 379 | 95 | 63 | 233 | 103 | 323 | 247 | 98 | 83 | 122 | 46 | 29 | 406 | 22 | 159 | 191 | 52 | | | | | | | | | | | | | | | 2,651 | 15,914 | | |
| 2/4 | 金 | 462 | 122 | 107 | 218 | 153 | 339 | 239 | 96 | 85 | 115 | 62 | 23 | 469 | 17 | 161 | 172 | 85 | | | | | | | | | | | | | | | 2,925 | 18,839 | | |
| 2/5 | 土 | 536 | 208 | 86 | 275 | 135 | | | | | | | | | | | | | | | | | | | | | | | | | | | | 1,240 | 20,079 | |
| 計 | | 5,427 | 931 | 661 | 1,840 | 974 | 1,647 | 1,373 | 432 | 447 | 575 | 246 | 110 | 2,162 | 97 | 859 | 869 | 351 | 914 | 164 | 20,079 | | | | | | | | | | | | | | | |

3 開票

(1) 開票所・開始日時

| | |
|--------|-------------------|
| 開票所 | 山口県立下関武道館 |
| 開票開始日時 | 令和4年2月6日午後9時15分から |

(2) 選挙長等

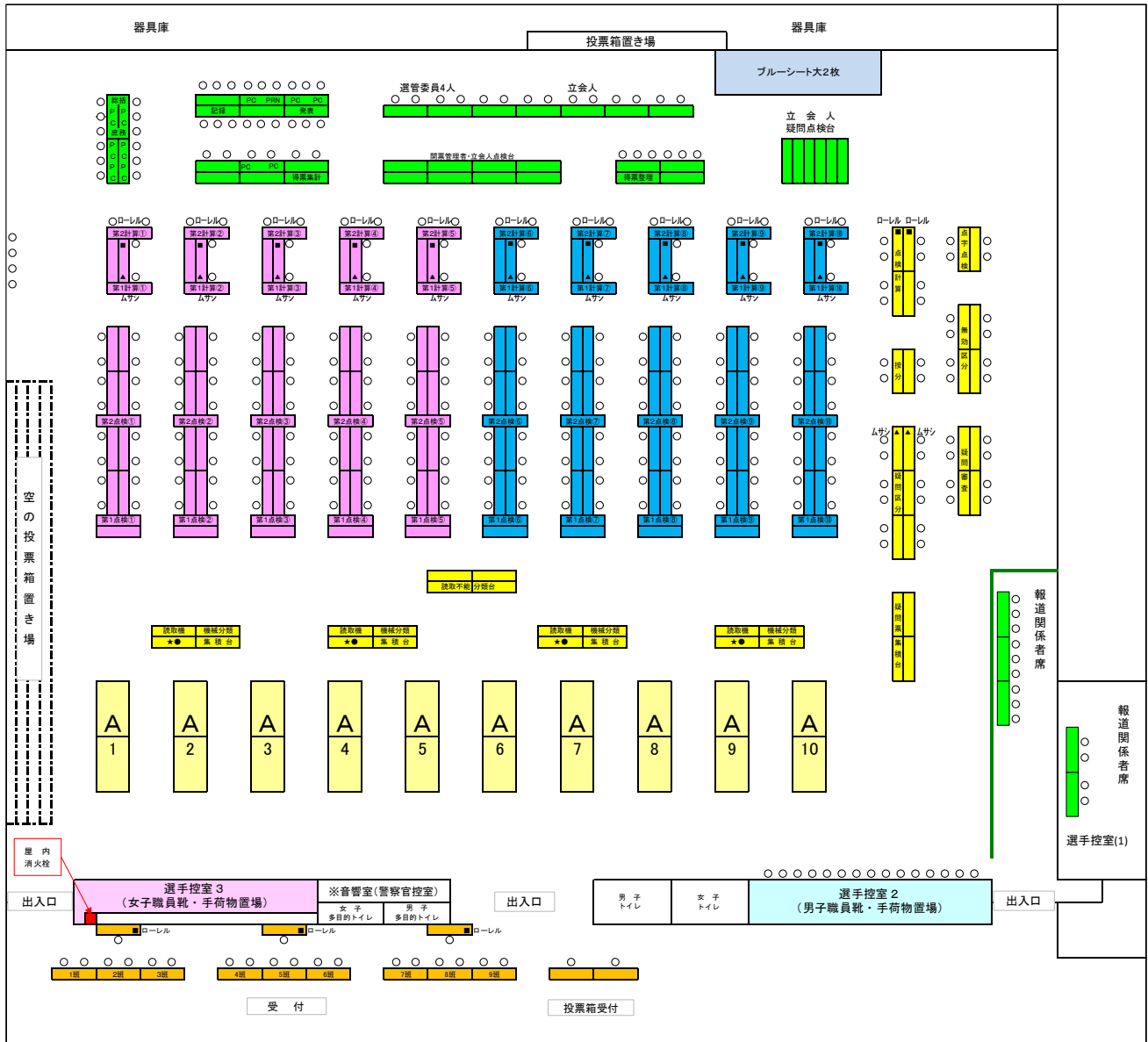
| | |
|--------|-------|
| 選挙長 | 大森 宏 |
| 同職務代理者 | 中野 善朗 |

(3) 開票状況

| 候補者名 | 22:00 | 22:40 | 山口県総計 | 当落 |
|---------|--------|--------|---------|--------|
| ちば まり | 9,000 | 10,269 | 50,566 | |
| 村岡 つぐまさ | 27,500 | 51,560 | 340,503 | 当選 |
| 得票計 | 36,500 | 61,829 | | 開票確定時刻 |
| 開票率 | 58.45% | 100% | | 22:40 |

| 有効投票数 | 無効投票数 | 投票総数 | 不受理総数 | 持ち帰りその他 | 投票者総数 |
|--------|-------|--------|-------|---------|--------|
| 61,829 | 618 | 62,447 | 1 | 0 | 62,448 |

(4) 開票所レイアウト



4 啓発

| 実施内容 | 設置場所等 |
|--------|---------------------|
| 電光掲示板等 | JR 下関駅前、川棚温泉駅前 |
| 街頭啓発 | 新型コロナウイルス感染症拡大のため中止 |
| マスコミ | ラジオ CM |
| 広報車 | |

5 その他

(1) 気象概況

| 降水量(mm) | | | 気温(℃) | | | 湿度(%) | | 風向・風速(m/s) | | | | 天気概況 | | |
|---------|-----|------|-------|-----|----|-------|----|------------|------|----|--------|------|---------------|-----------------|
| 合計 | 最大 | | 平均 | 最高 | 最低 | 平均 | 最小 | 平均風速 | 最大風速 | | 最大瞬間風速 | | 昼 | 夜 |
| | 1時間 | 10分間 | | | | | | | 風速 | 風向 | 風速 | 風向 | (06:00-18:00) | (18:00-翌日06:00) |
| 0.0 | 0.0 | 0.0 | 3.9 | 6.1 | 2 | 51 | 44 | 6.5 | 9.3 | 北西 | 15.8 | 西 | 曇一時晴 | 曇一時雪、みぞれを伴う |

出典：気象庁ウェブサイト-下関地方気象台観測データ

(2) 関連ウェブサイト

山口県 令和4年2月6日執行 山口県知事選挙の投開票の状況

<https://www.pref.yamaguchi.lg.jp/soshiki/176/134345.html>